



MOUNTAIN TOWN CAR WASH

LOT #11 DRIGGS FLY-IN PARKWAY

Drawn by: DRN
 Checked by: JRG
 Job no.: No.
 CONSULTANTS
 Structural
 Mechanical & Electrical
 XL Engineering
 12809AS111
 Civil Engineering

REVISIONS

| Date | Issue Date |
|------|------------|
| | |

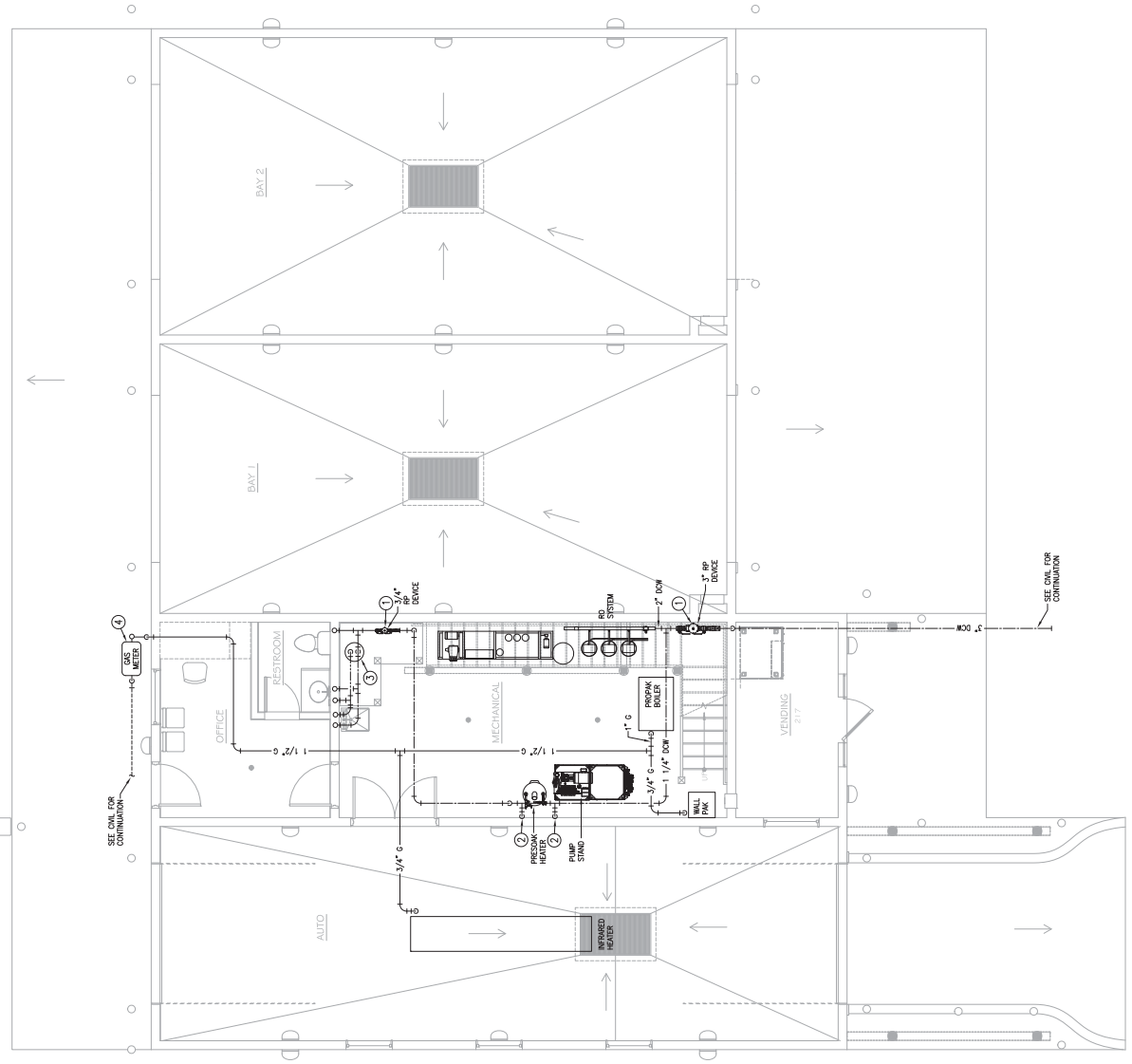
P-1
 PLUMBING
 SUPPLY
 PLAN

KEYED NOTES:

1. LOCATE RFRP SERVICE UNDER STAIRS ACCESSIBLE FOR INSPECTIONS. FUNNEL BRANCH TO PROVIDE 1" WALL VALVE CAPPED FOR EQUIPMENT CONNECTION BY INSTALLER.
2. PROVIDE 8 GALLON 1500 WATT WATER HEATER UNDER WORK BENCH.
3. COORDINATE METER CAPACITY AND DELIVERY PRESSURE WITH GAS UTILITY.

GENERAL NOTES:

1. ALL EQUIPMENT CONNECTIONS TO BE MADE BY INSTALLER.
2. GASWORK EQUIPMENT CONNECTIONS TO BE MADE BY INSTALLER.





MOUNTAIN TOWN CAR WASH

LOT #1 DRIGGS FLY-IN PARKWAY

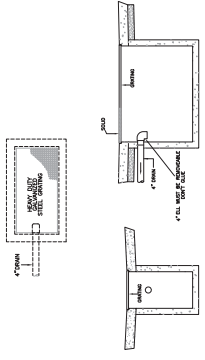
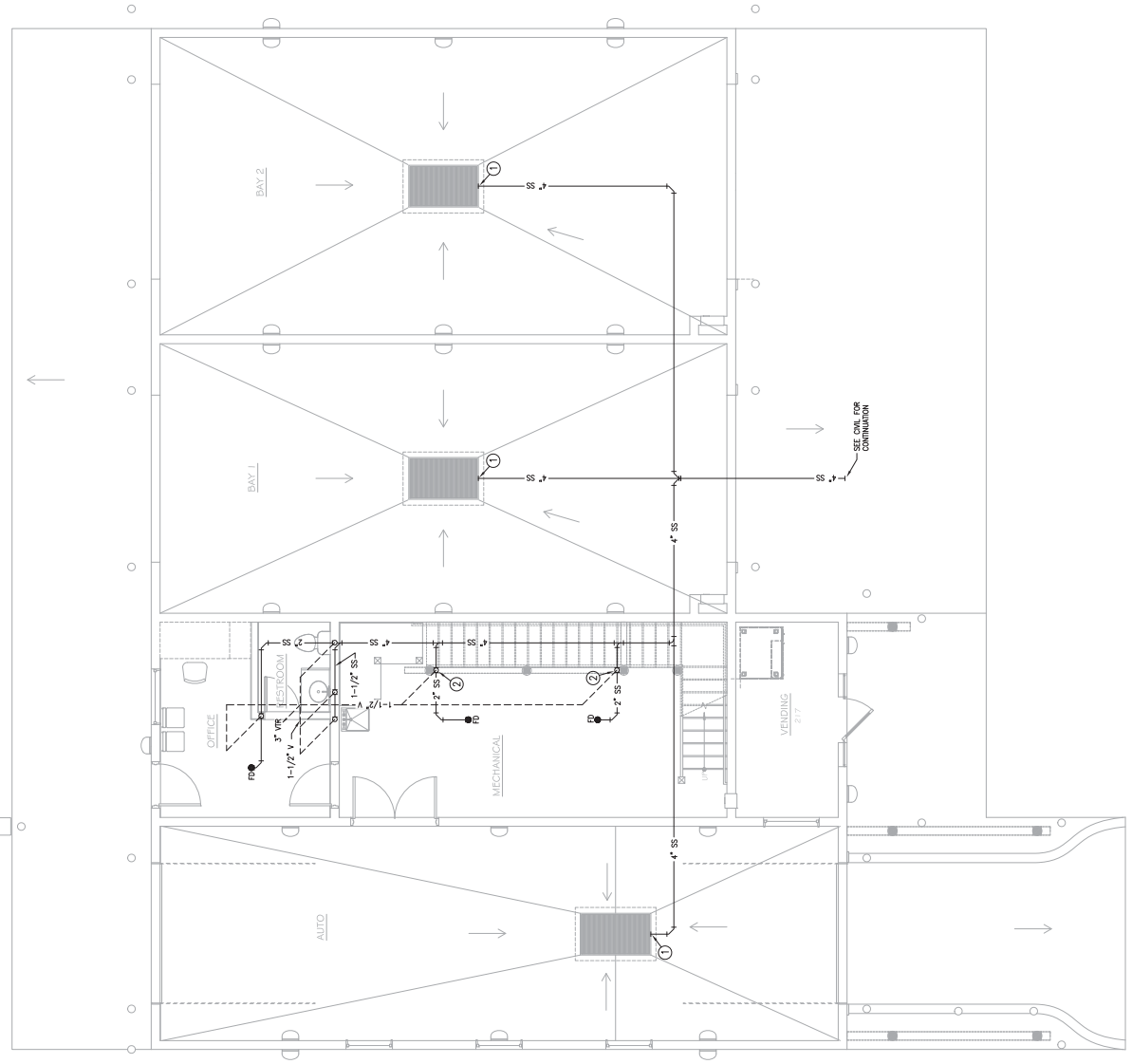
Drawn by: CRN
Checked by: JRG
Job no.: No.
CONSULTANTS
Structural
Mechanical & Electrical
XL Engineering
12870A5111
Civil Engineering

REVISIONS
Date: Issue Date

P-2
PLUMBING
WASTE &
VENT PLAN



KEYED NOTES:
① SEE THIS SHEET FOR MUD PIT DETAIL AND CONNECTIONS.
② ROUTE VENT UP COLUMN.



① STANDARD MUD PIT
NOT SCALE - SEE DRAWING MUD PIT 02